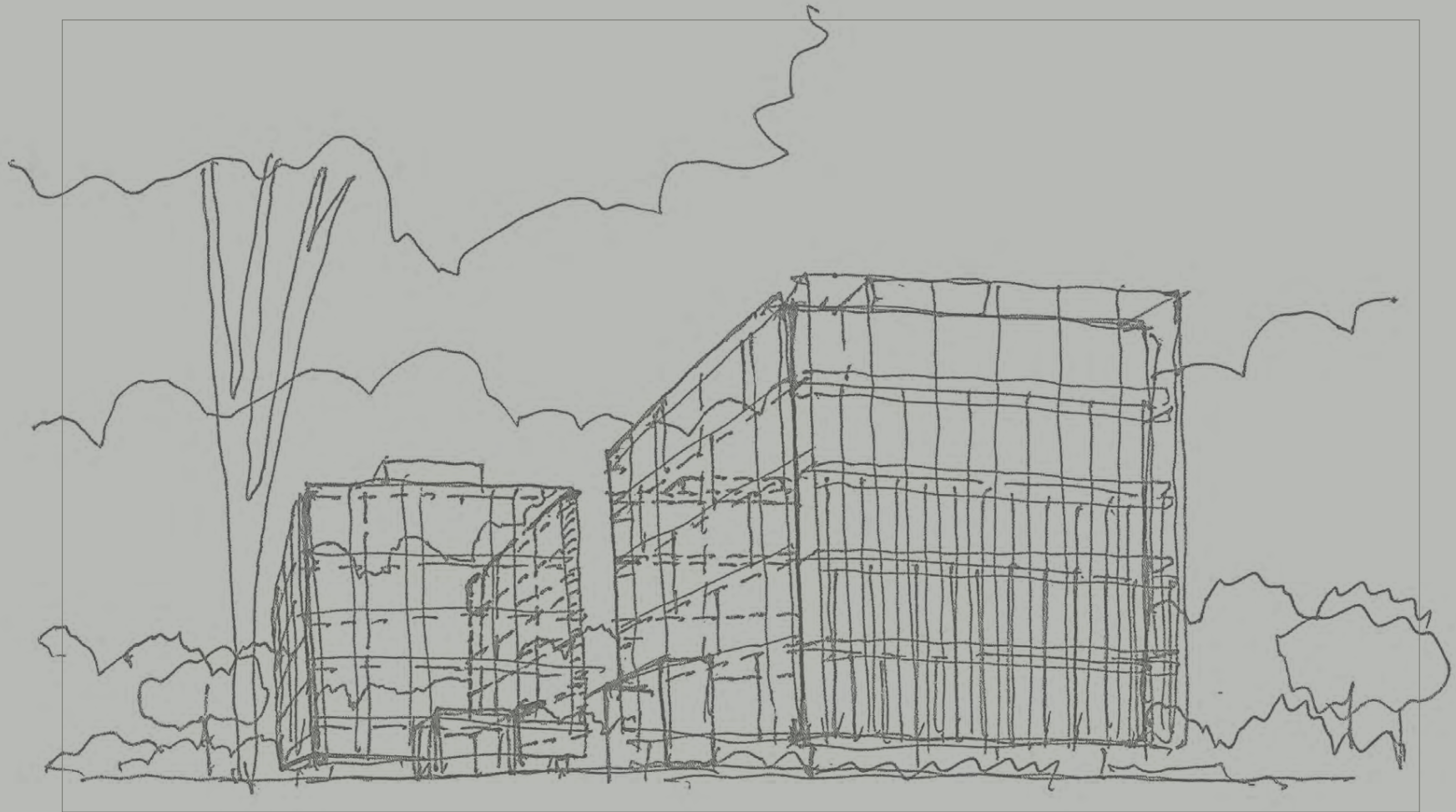
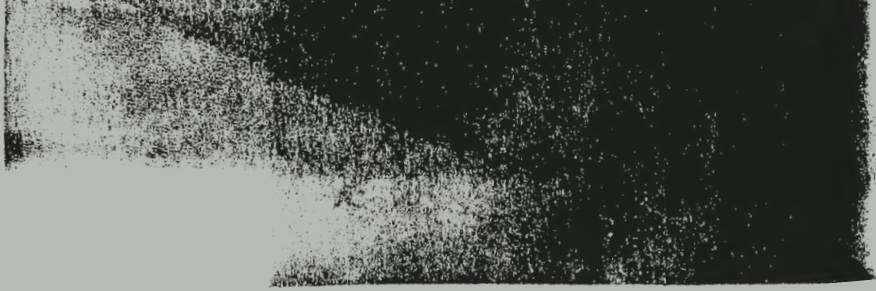


PETIT  
JERVOIS



A PETIT  
COLLECTIBLE  
BY SC GLOBAL



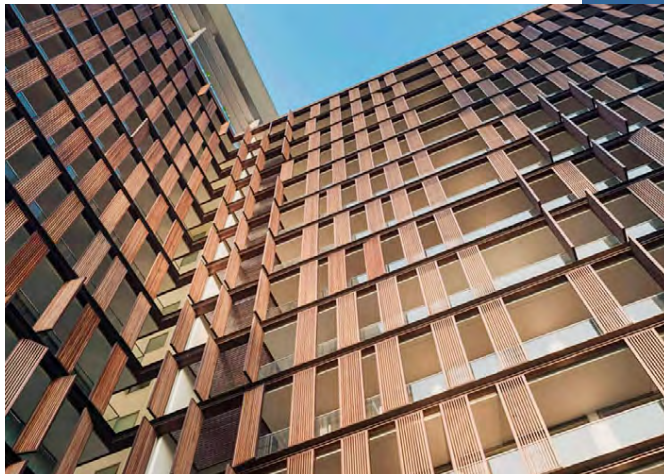




Over the years, we have never let modestly defined spaces limit our creativity. Today, we pay tribute to this original spirit with a new class of luxury homes—Petit Collectibles™.

## The First Petit Collectible

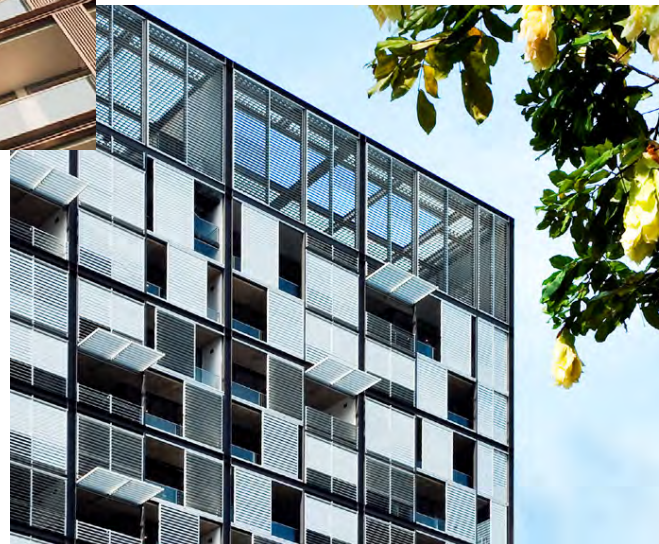
2011  
Hilltops



2003  
Lincoln  
Modern



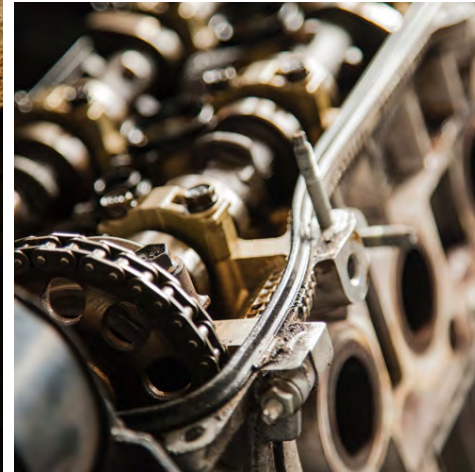
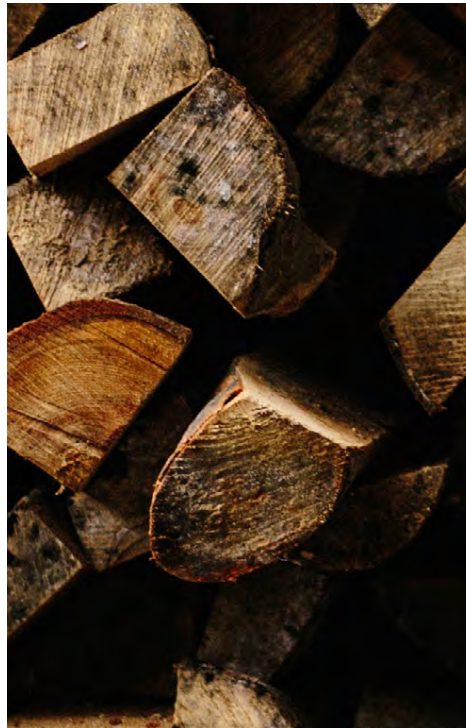
2012  
Martin  
No.38



Petit Collectibles™ is a natural progression for SC Global, inspired by the success of our smaller luxury residences. The inspiration has driven us to create yet another new concept in luxury living that follows no rules but is anchored by principles that prize thoughtfulness and sharp attention to detail. We are proud and excited about the launch of Petit Collectibles™, which will once again set the tone for truly original luxury living spaces.

Simon Cheong  
FOUNDER AND CHAIRMAN  
OF SC GLOBAL

“ Over the years our apartments have often been referred to as collectibles. Each an original in their own right. ”



## Rigorously Considered



Petit Jervois embodies SC Global's spirit of originality and craftsmanship, where every detail and function is rigorously considered and refined.

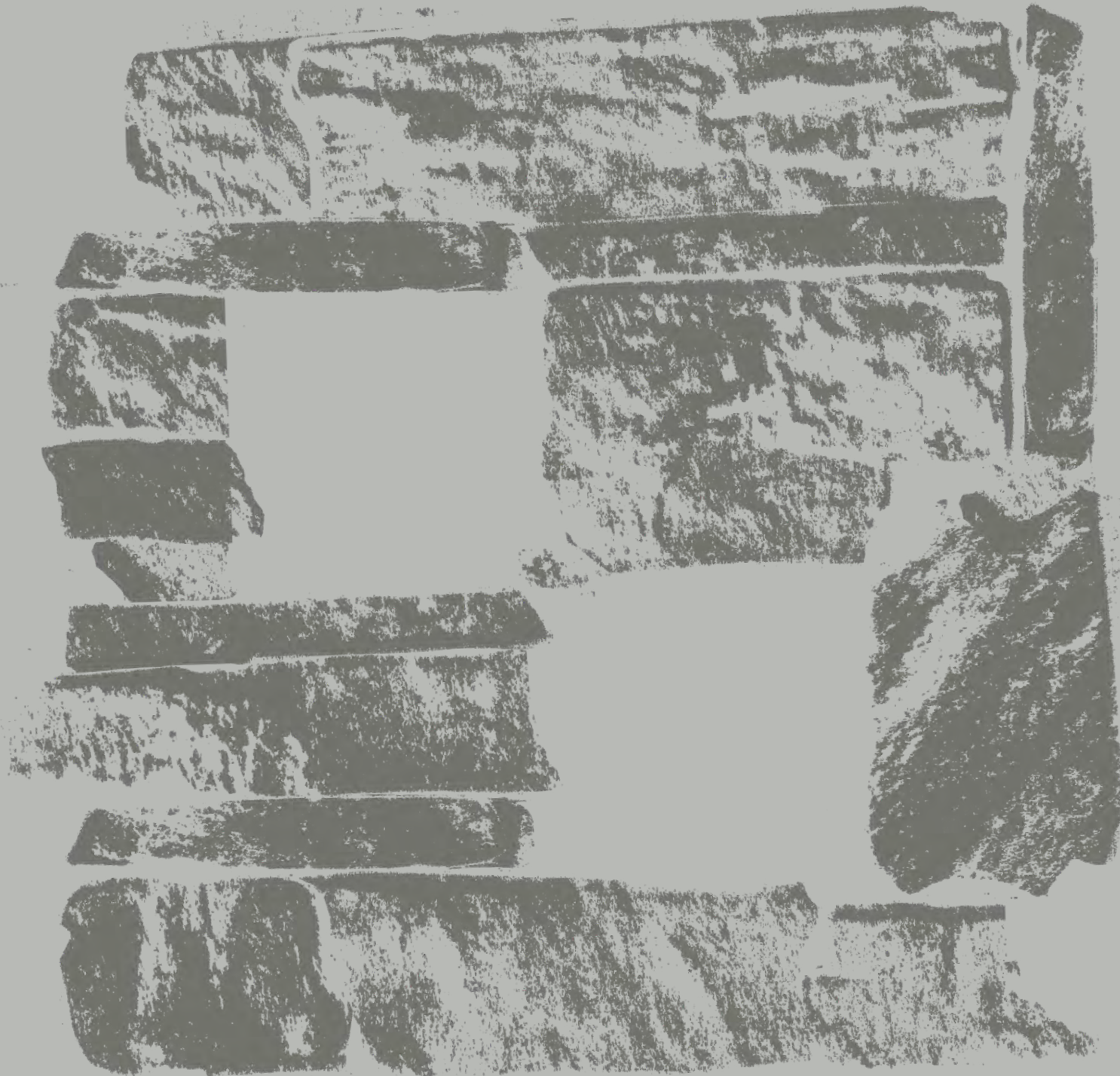
It brims with the energy, warmth, and raw beauty of brass, steel, glass and concrete, which shape and define its architectural and living experience.

Here, then, are the rarest of homes, worthy of your unique stamp of quiet, understated elegance. An inviting haven for The Ultimate Living.









A. THE ARCHITECTURE

# Carved from Possibilities









## Two cubes. Infinite configurations for liveability.

---

Using a singular block as its conceptual foundation, the architects imagined splitting open this structure to create a pair of pristine cubes. These cubes were then positioned after careful consideration of the tropical climate's vagaries and the surrounding neighbourhood.







The result was low-slung, angular apartment buildings surrounded by baroque-inspired landscaping and two piazza-like spaces, each providing distinctly different experiences.

The first piazza serves as a striking entry point with its sweeping driveway; the rear piazza is a veritable sanctuary, with pockets of quiet spaces for residents to unwind and bask in the tranquil surrounds. Lush greenery encircles a 20-metre swimming pool and an al fresco pool pavilion with fitness equipment — an extension of the Ultimate Living in the natural beauty of the outdoors.





B. THE INTERIOR

# Innately Refined





Two Bedroom Apartment



Each living space is anointed with flexible functionality. Walls slide and seemingly vanish, providing residents the luxury of seamless integration and the freedom to design their spaces to suit their lifestyles.

Intricate detailing, the jointing of base metals, and raw concrete finishes capture the grace of urban-industrial design at PETIT JERVOIS.







Two Bedroom Apartment



Tactility was accorded equal importance, with every material carefully chosen so the living environment feels reassuringly warm.

Without doubt, Petit Jervois represents a delightfully unorthodox interpretation of luxury — one that is honest in its simplicity and realised to the highest standards of refinement.

Living well is easy here, as all the elements of a truly welcoming home conspire to provide comfort, retreat and sumptuous intimacy.

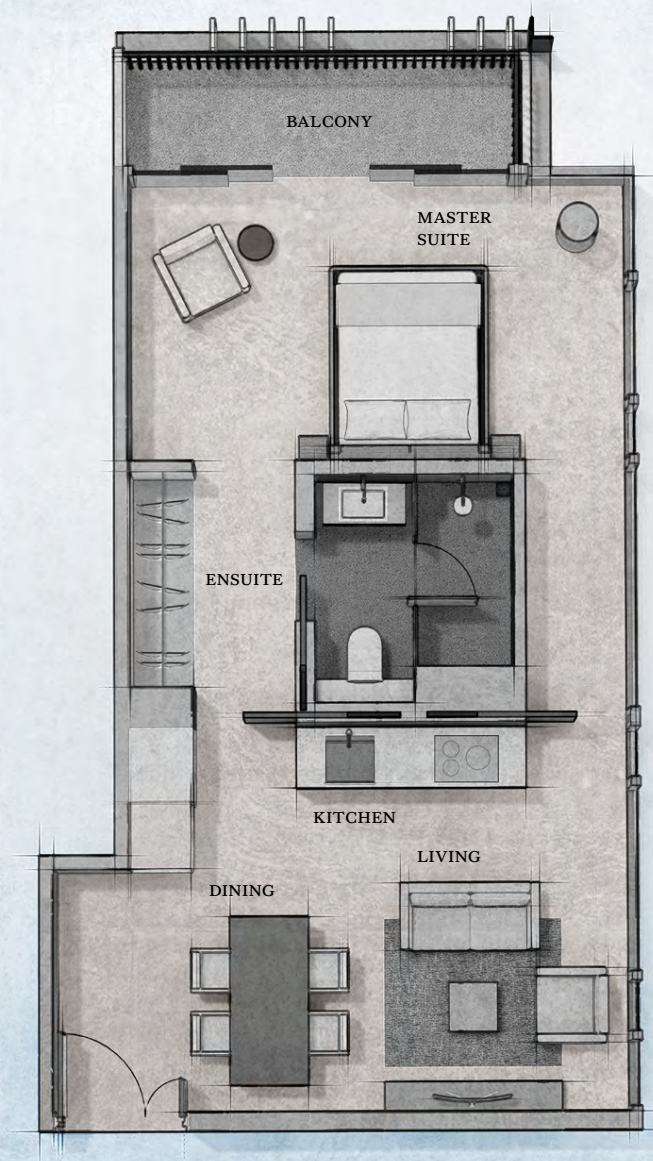
■ We took inspiration from LUDWIG MIES VAN DER ROHE'S Farnsworth House. Designed in 1945, the concept is based on living space wrapped around the centralised core facilities, giving residents the flexibility of creating their own unique spaces. ■

— Simon Cheong



One Bedroom Apartment





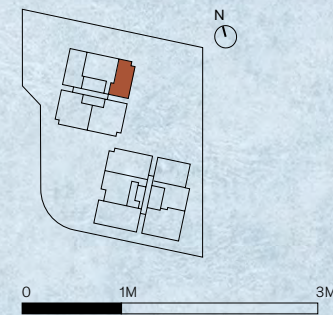
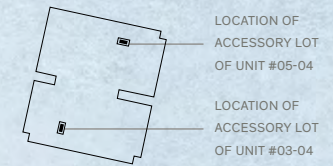
# One Bedroom Apartment

## Type A4

**UNIT SIZE**  
Approx. 59 m<sup>2</sup> / 635 ft<sup>2</sup>

**UNIT NO.**  
#03-04, #05-04

### BLOCK 1 LOWER ROOF KEY PLAN



Area includes air-con accessory lot and balcony. The balcony shall not be enclosed unless with the approved balcony screen (refer to annexure). Please refer to key plans for orientation. All plans are subject to amendments as may be approved by the relevant authorities. Floor areas are approximate measurements and are subject to final survey. BP Approval No. A1653-17428-2017-BP02 dated 27/07/2018



# Two Bedroom Apartment

## Type B8

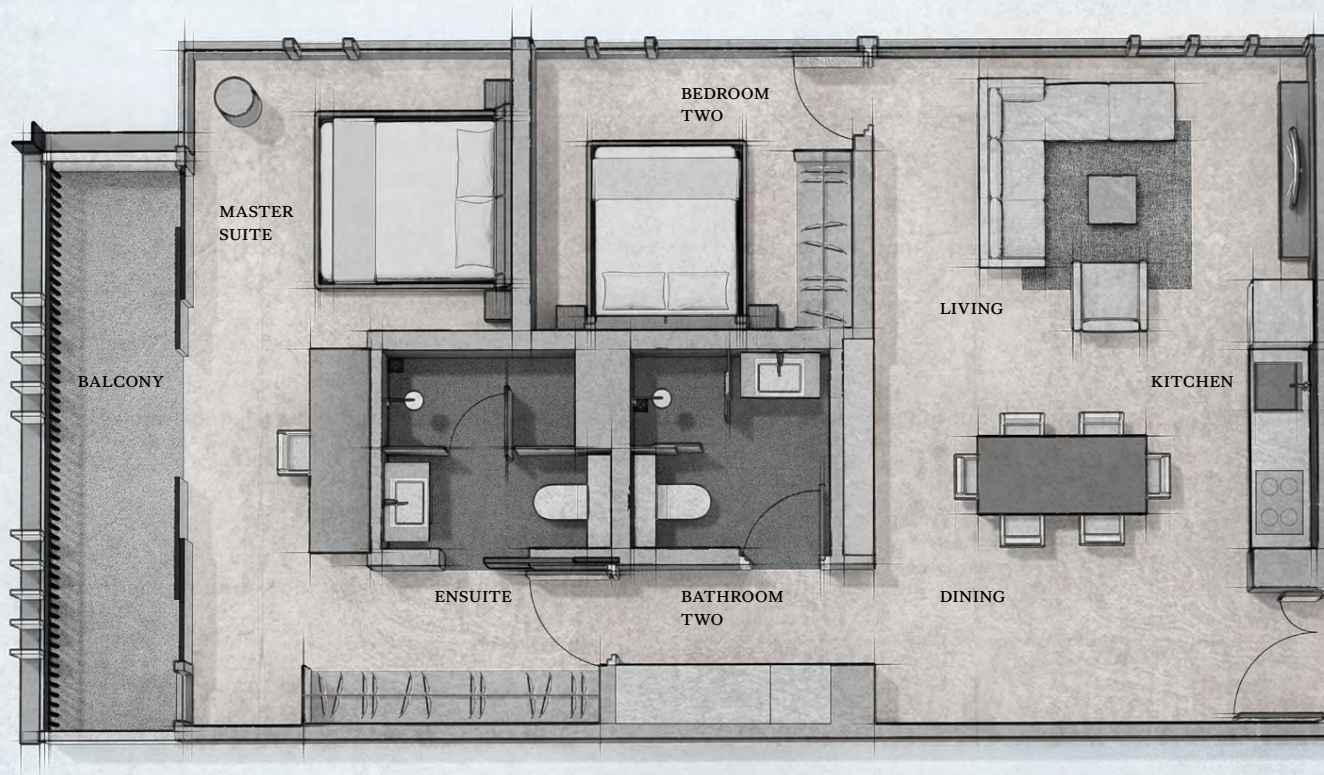
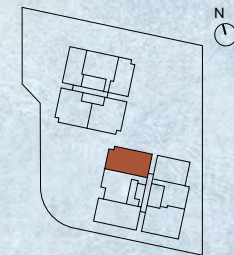
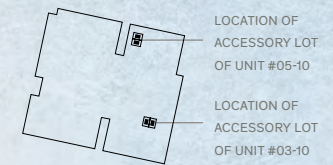
UNIT SIZE

Approx. 93 m<sup>2</sup> / 1,001 ft<sup>2</sup>

UNIT NO.

#03-10, #05-10

### BLOCK 2 LOWER ROOF KEY PLAN

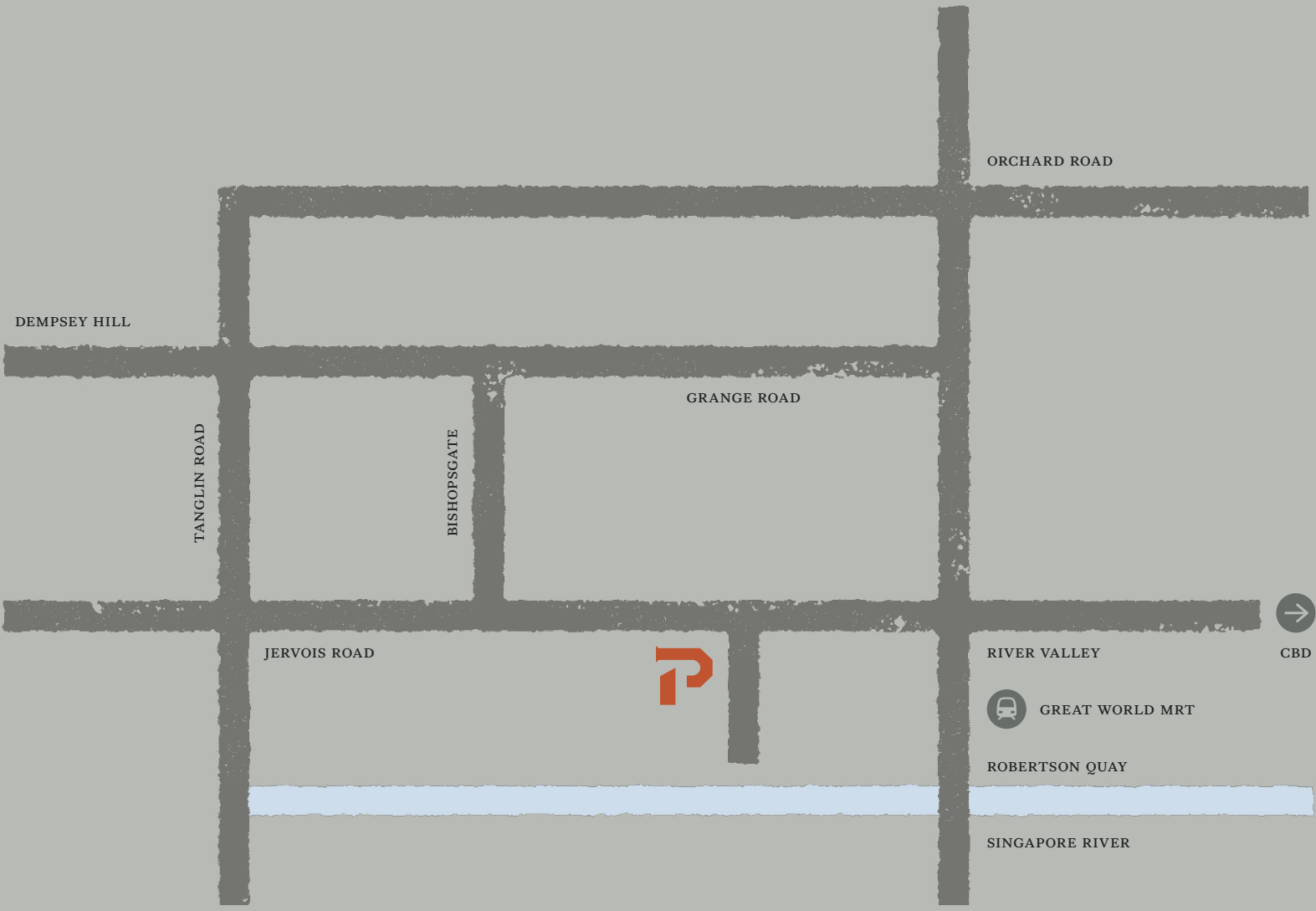


Area includes air-con accessory lot and balcony. The balcony shall not be enclosed unless with the approved balcony screen (refer to annexure). Please refer to key plans for orientation. All plans are subject to amendments as may be approved by the relevant authorities. Floor areas are approximate measurements and are subject to final survey. BP Approval No. A1653-17428-2017-BP02 dated 27/07/2018



C. THE DISTRICT

# Closer to Perfection



DEMPSEY HILL

ORCHARD ROAD

TANGLIN ROAD

BISHOPSGATE

GRANGE ROAD

JERVOIS ROAD



RIVER VALLEY



CBD

 GREAT WORLD MRT

ROBERTSON QUAY

SINGAPORE RIVER





SINGAPORE BOTANIC GARDENS

DEMPSEY HILL  
9 mins

ORCHARD BOULEVARD

ORCHARD ROAD  
5 mins

HIGH COMMISSION OF MALAYSIA

GREAT WORLD CITY  
15 mins | 3 mins

TIONG BAHRU  
15 mins | 4 mins

BISHOPSGATE

INDONESIAN EMBASSY

THE MARQ ON PATERSON HILL

NGEE ANN CITY

SOMERSET

VALLEY POINT  
5 mins | 2 mins

CBD  
8 mins

ALEXANDRA CANAL  
LINEAR PARK  
3 mins



PETIT JERVOIS

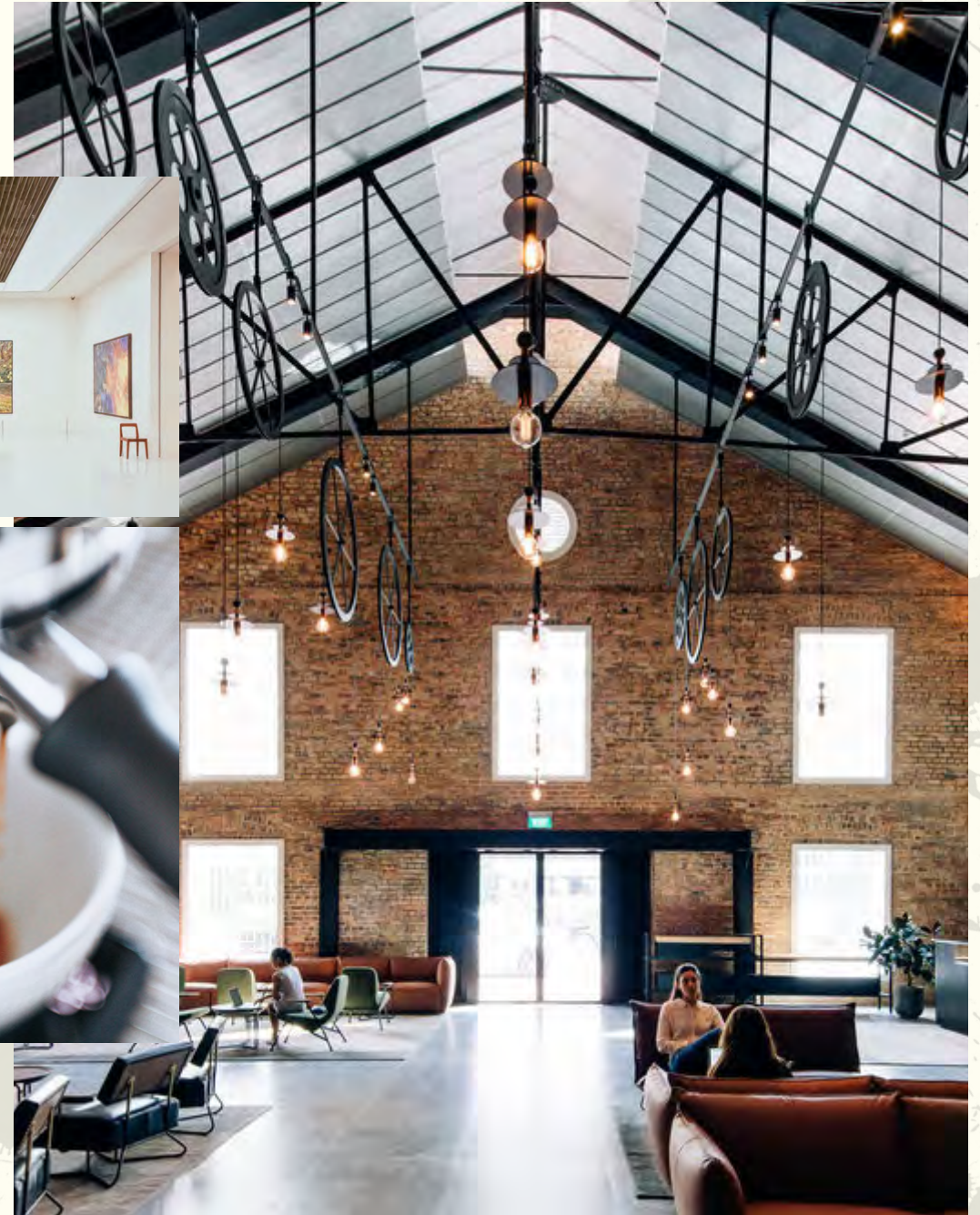
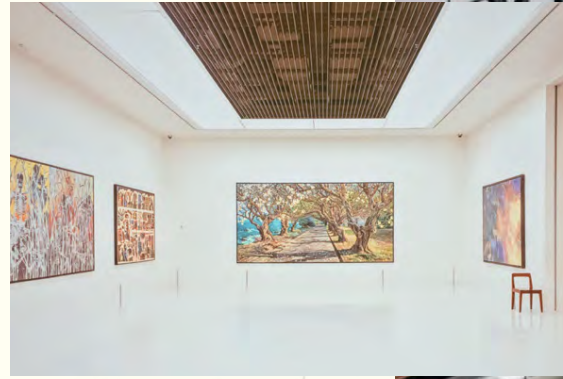
ROBERTSON QUAY  
5 mins



Cherished for its prime location—close to everything that matters, including the need for privacy.

Discreetly positioned in the leafy perimeters of exclusive Bishopsgate and adjacent to a park connector. You are perfectly situated to enjoy quiet morning runs and bucolic evening strolls.

Hidden away yet in the centre of it all, Petit Jervois provides endless experiences just beyond your doorstep. Only minutes away, take in the charms of gentrified Tiong Bahru, with its bijoux cafes and whimsical stores, or the riverside enclave of Robertson Quay, rich with art galleries and a thriving bar and restaurant scene.







- ENTERTAINMENT**
  - CINELESURE ORCHARD
  - CLARKE QUAY
  - DEMPSEY HILL
  - NATIONAL MUSEUM OF SINGAPORE
  - ROBERTSON QUAY
  - SINGAPORE REPERTORY THEATRE
  - SINGAPORE TYLER PRINT INSTITUTE
  - TIONG BAHRU
- MEDICAL CENTRES**
  - CAMDEN MEDICAL CENTRE
  - GLENEAGLES HOSPITAL
  - MOUNT ELIZABETH MEDICAL CENTRE
  - PARAGON MEDICAL CENTRE
- MRT**
  - DHOBY GHAUT
  - GREAT WORLD CITY (u/c)
  - ORCHARD BOULEVARD (u/c)
  - ORCHARD
  - SOMERSET
  - TIONG BAHRU
- RETAIL**
  - 313@SOMERSET
  - FORUM THE SHOPPING MALL
  - GREAT WORLD CITY
  - HEEREN
  - ION ORCHARD
  - MANDARIN GALLERY
  - ORCHARD CENTRAL
  - ORCHARD GATEWAY
  - PARAGON
  - PLAZA SINGAPURA
  - SCOTTS SQUARE
  - SHAW HOUSE
  - TAKASHIMAYA SHOPPING CENTRE
  - TANGLIN MALL
  - THE CENTREPOINT
  - VALLEY POINT
  - WHEELLOCK PLACE
  - WISMA ATRIA
- SCHOOLS**
  - ACS JUNIOR SCHOOL
  - CHATSWORTH INTERNATIONAL SCHOOL
  - ETONHOUSE INTERNATIONAL PRE-SCHOOL
  - RIVER VALLEY PRIMARY SCHOOL





## Development Summary

**SITE AREA**

3,162.30 m<sup>2</sup> /  
34,038.71 ft<sup>2</sup>

**DWELLING UNITS**

55 Units

**NO. OF BLOCKS**

2 Blocks

**NO. OF STOREYS**

5 Storeys (per block)

**CAR PARKING LOTS**

57 Lots

**LOCATION**

33 Jervois Road

**ARCHITECT**

RTNQ  
Architects

**TENURE**

Freehold

**DISTRICT**

D10

**LEGEND**

- 1. Security
- 2. Residents' Drop-off
- 3. Swimming Pool
- 4. Pool Deck
- 5. Fitness Pavilion



# SC Global Milestones

Luxury real estate developer SC Global has established a reputation for innovating original lifestyle concepts and awarding winning architecture, each a careful and considered response to delivering 'The Ultimate Living' experience.



## 2001

### THE LADYHILL

BCA Singapore—  
Excellence Award  
For Residential  
Developments, 2004

Miami+Beach  
Bienal International  
Awards—Gold Medal  
Winner, 2005

Singapore Institute  
of Architecture—  
Design Award, 2006

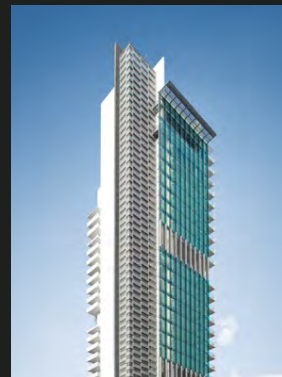


## 2003

### LINCOLN MODERN

Royal Institute of British  
Architects (Riba)—  
International Award, 2005

Singapore Institute of  
Architecture Awards—  
Honourable Mention, 2006



## 2003

### BLVD



## 2004

### THR3E THR3E ROBIN

Singapore Institute  
of Architecture—  
Design Award, 2005



## 2011

### THE MARQ

Singapore Institute of  
Architecture Awards—  
Honourable Mention 2011



## 2011

### HILLTOPS



## 2012

### MARTIN NO.38

Singapore Institute  
of Architecture—  
Design Award, 2011

Singapore Institute  
of Architecture Awards—  
Building of The Year, 2011

World Architecture  
Festival—Best Completed  
Condominium, 2012

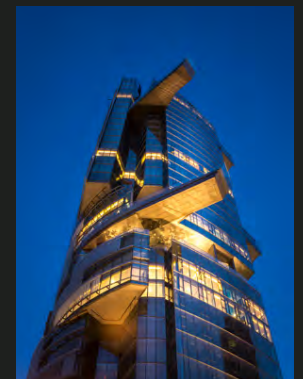
Singapore President's  
Design Award, 2012



## 2013

### SEVEN PALMS SENTOSA COVE

Australian Institute of  
Architects—International  
Architecture Award, 2015



## 2015

### SCULPTURA ARDMORE



# PETIT JERVOIS

---

## SALES GALLERY

200 Newton Road

Viewing by appointment only.

## ENQUIRIES

+65 6100 2323

Note: All renderings are for illustration purposes only.

---

[WWW.PETITJERVOIS.COM](http://WWW.PETITJERVOIS.COM)